

VITAL PLUS

Blood Glucose Monitoring System

Code Free



0.5 μ l
Tiny sample volume

5 Seconds
Fast test time

10 ~ 900 mg/dL
Broad measurement range

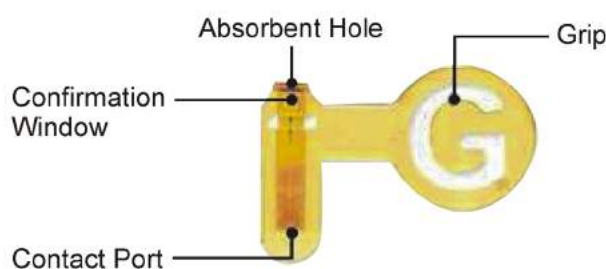
10~70%
Hematocrit range

AST Alternative site testing

FAD GDH FAD-GDH enzyme



Big Strip, Easy Grip Hygienic and Comfortable



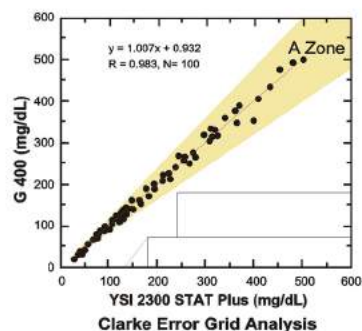
Technical Specifications

Model No.	G 400
Methodology	Electrochemistry
Measurement Time	5 Seconds
Blood Sample Volume	0.5 μ l
Sample Type	Whole Blood (Capillary or Venous)
Measurement Range	10~900mg/dL(0.6~50 mmol/L)
Memory	1.000
LED Indicator	Indication LED lighting
PC Interface	USB
Calibration	Code FREE
Operation Condition	Temp. : 4~40 °C / Humi.: <85 %
Storage Condition	Meter : -10 ~60 °C, Strip: 1 ~32 °C
Battery	CR-2032 (1 Coin Battery)
Battery Life	3.000 Tests (with LED lighting: 1.000 tests)
Meter Dimensions (WxLxT)	58 mmx 101.5 mmx 12.5 mm
Weight	40 g(with battery)

System Performance

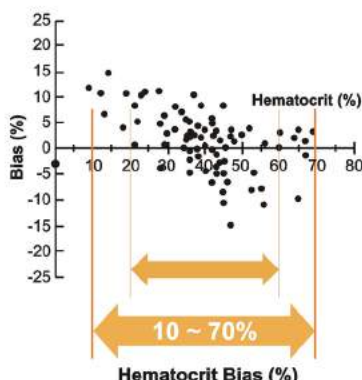
Clinical Accuracy

Clarke Error Grid Analysis (EGA) is accepted as one of the "gold standards" for determining the accuracy of blood glucose meters. VITAL PLUS shows excellent performance from the analysis where all the test result fall in the clinically valid region A Within +/- 15% error.



Influence of Hematocrit

VITAL PLUS applies latest advanced technology to minimize influence of hematocrit. The different hematocrit level is the main cause of errors that degrades the accuracy. VITAL PLUS shows excellent suppression of hematocrit influence from 10% ~ 70%.



Within Run Precision Test (Venous Blood)

In our continuous quality control procedures, the VITAL PLUS 1 Code BGMS revealed the highest Within Run precision from lot to lot data measuring.

Glucose Average (mg/dL)	SD	CV (%)
45 (2.3 mmol/L)	2.3	5.3
93 (5.2 mmol/L)	3.1	3.3
137 (7.6 mmol/L)	4.4	3.2
215 (11.9 mmol/L)	5.9	2.7
341 (18.9 mmol/L)	7.9	2.3

*SD=Standard Deviation ** CV=Coefficient of Variation